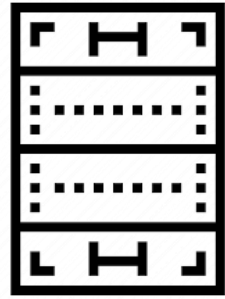


FACILITY REOPENING NATURAL TURF PITCH CHECKLIST



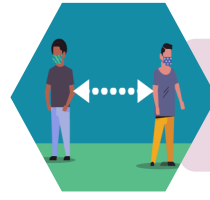
Work through our checklists for guidance on how to;

- Make changes to facilities to help prevent the spread of Covid-19
- Re-open facilities safely & efficiently



PREPARE THE SITE

- Re-schedule and prioritise your normal summer maintenance programme if it has not been carried out
- Carry out your standard pitch health and safety review, including all pitch furniture (eg goalposts/perimeter fencing) and equipment.
- If you have been unable to cut the grass mow it carefully and remove no more than 1/3rd grass length at any one time
- Check to see if the pitch too hard
- Check to see if the pitch is showing any signs of cracking
- Check to see if there is there any dog fouling on the pitch
- Check to see if there is any glass or other sharp impediments on the pitch,
- Check to see if there any general litter
- Speak to the groundsmen to get their input on to the state of the pitch
- Ensure 100% of the field is safe. If a small area is unsafe then the pitch should not be used.



SOCIAL DISTANCE

- Inform members of access restrictions and distance regulations by appropriate signage
- Use a line marking machine to paint grids for socially distanced activity zones



Advice, regulations, and insurance

The Health and Safety Executive <https://www.hse.gov.uk/> provides regulation and guidance on health and safety in the workplace. Its web pages include special advice related to COVID-19, details of health and safety related laws, plus advice on how to manage risk.



HYGIENE

- Ensure hand-sanitiser is available at appropriate points and that stock levels are sufficient to regularly replenish
- Use signs and posters to build awareness of good handwashing technique, the need to increase handwashing frequency, avoid touching your face and to cough or sneeze into your arm
- Direct the flow of participants out onto the pitch for example using signage and tape marks on the floor
- If maintenance equipment or machinery is used by multiple operators ensure appropriate cleaning procedures are in place after use.